

Thermolan® is a Thermal Analysis System for spheroidal, lamellar and compact graphite cast iron. With a single sample it can monitor over 300 parameters, offering key information regarding the predicted quality of castings in less than 60 seconds.



- Nodularity rate (shape of graphite)
- Matrix Structure (Ferrite / Perlite / Carbides)
- Carbon content
- Prediction of microstructure
- Risk of microshrinkage defects
- Graphitic precipitation (density of graphite)
- Chemical Composition
- Self Feeding factor
- Solid Fraction Evolution

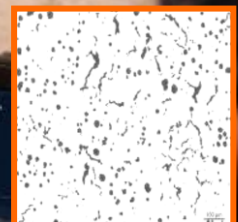
### Ductile



### Flake



### Compact



## Main Applications

- Assess 100% of your melts, ladder by ladder.
- Determine the effect of raw materials on your base metal.
- Measure and compare the effect of inoculants and additives.
- Adapt your manufacturing systems to the real conditions of your metal and vice versa.
- Extrapolate the results of the liquid melt to the critical sections of the casting
- **GET CORRECTIVE ADVICE TO IMPROVE THE QUALITY OF YOUR CASTING**



## 4 easy steps

- 1) Connect the thermal cup/s to the sample holder.
- 2) Pour molten metal inside the thermal cup/s.
- 3) Follow real time solidification curve and get system readings.
- 4) Get advice on how to improve the characteristics of your casting.



# Hardware + software

Thermolan® is a portable system that can be used in different stations at the foundry shop.

It consists of:

- A sample holder that can handle up to 3 quick cups at the same time.
- An analyzer unit which supports up to 6 independent channels for sample holders to be analyzed at the same time.
- A software compatible with Windows 7 or higher with an internal database to store information.
- Several thermal cups (Quick Cups) designed to perform different tests.
- The Thermolan® viewer interface where users can tailor the screen views.

